



Genio 700 Evaluation Kit Quick Start Guide

Version: 0.1
Release date: 2023-03-08

Use of this document and any information contained therein is subject to the terms and conditions set forth in Exhibit 1. This document is subject to change without notice.

Version History

Version	Date	Author	Description
0.1	2023-03-08	MTK	Draft Release

Table of Contents

Version History	2
Table of Contents	3
1 Packing list	4
2 Genio 700-EVK System Setup	5
3 Genio 700-EVK Board overview	6
4 LCM Holder setup	7
5 DC Camera DTB board installation	8
6 How to Power up the Gneio 700 EVK	9

List of Figures

<i>Figure 2-1. Genio 700 EVK System</i>	5
Figure 3-1. Genio 700 EVK Board Overview	6
Figure 4-1. LCM Holder Setup	7
Figure 5-1. D2 Camera DTB board	8
Figure 6-1. Plug AC Adapter , Press Power Key and LEDs Status	9

List of Tables

Table 1-1. Packing List	4
-------------------------------	---

1 Packing list

S.No	Part Number or Marking	Item Name	Description	Quantity
1	IoT-Genio 700 EVK-P1V3	Genio 700 Main Board		1
2	Camera Board (Genio 700-	Camera Board	Camera sub-board using onsemi AP1302 Image Sensor Processor	1
	CAM DTB-D1V1-D2)	(D2 Version)		
3	IMX214 Camera Module	Camera Module for D2	Camera Module using SONY IMX214 CMOS Digital Image Sensor, preconnected to AP1302 ISP Camera Board	1
4	With Touch Panel and FFC cable	7" LCD Panel	LCM Module	1
5	M.2 WIFI6 Module AW-XB468NF (IC: MT7921L)	WIFI Module		1
6		WIFI Antenna		2
7		WIFI Antenna Cable		2
8		12V AC adaptor		1
9		AC Power cord		1

Table 1-1. Packing List

2 Genio 700 EVK System Setup

Please refer below pictures for entire assembled Genio 700 EVK, the entire peripherals include:

- 1: LCD Module with Touch Panel * 1 set
- 2: D2 Camera board with IMX214 Camera module
- 3: Connectivity module with 2 antennas * 1 set
- 4: Power Adapter * 1 set



Figure 2-1. Genio 700 EVK System

3 Genio 700-EVK Board overview

Please refer below picture for IO function overview of EVK.

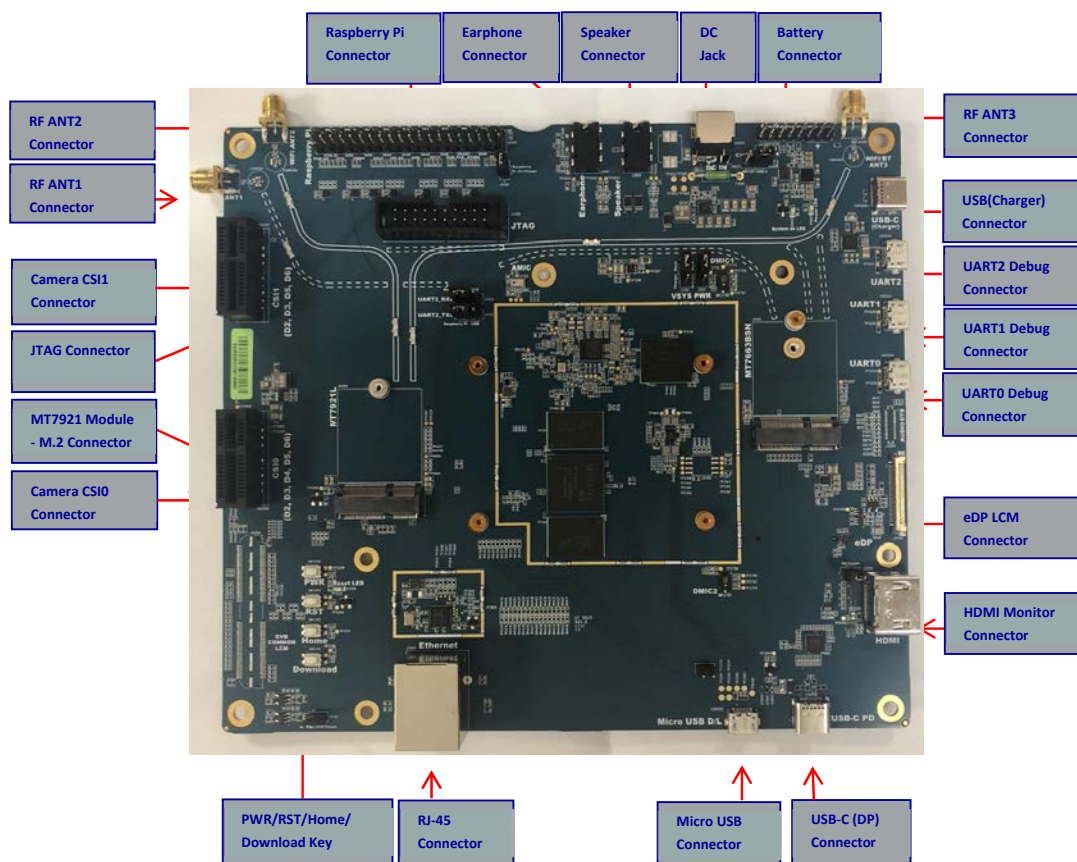


Figure 3-1. Genio 700 EVK Board Overview

4 LCM Holder Setup

LCM Holder set up :

Use your hand to turn the screw plastic head

Move the LCD to need a location and twist the screw plastic head tight, as in the picture below.

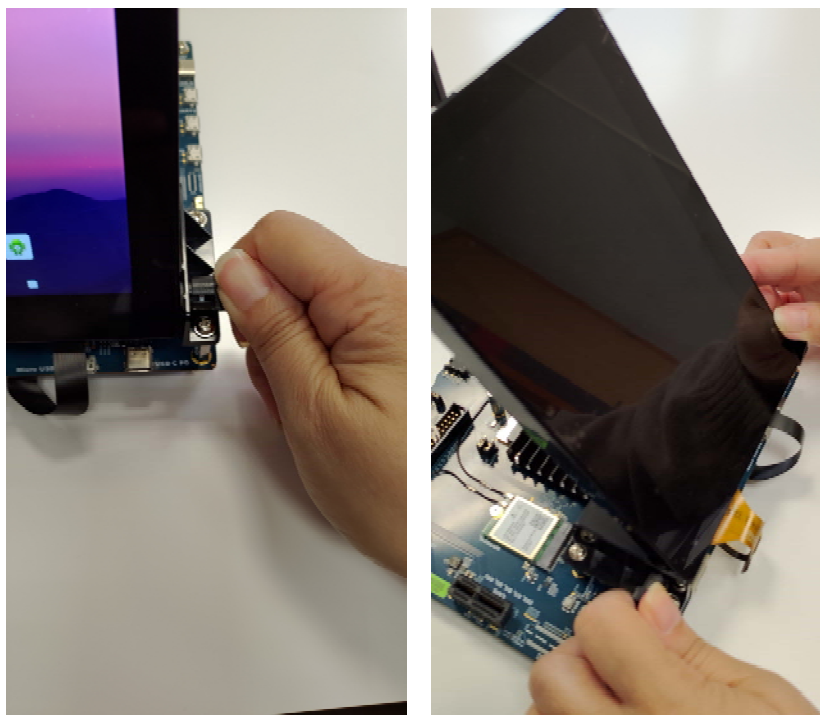


Figure 4-1. LCM Holder Setup

5 Camera DTB board installation

D2 camera install procedure:

Install D2 Camera board into Genio 700 EVK mainboard. Connector location can be referred to in the picture below.

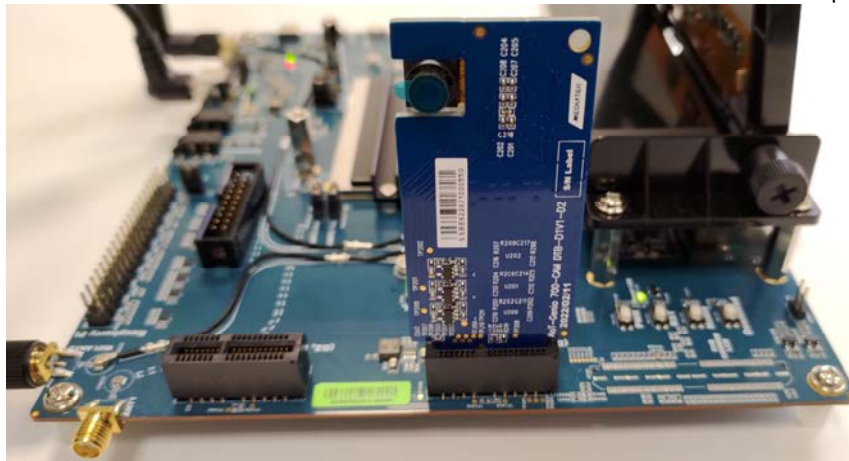


Figure 5-1. D2 Camera DTB board

6 How to Power Up the Genio 700 EVK

1. **You must install the Camera DTB on the Genio 700 EVK board.**
2. Connect UART0 (CN3200) to the computer via a USB cable. (If you want to see the logs.)
3. Power on the system by long pressing Power Key for 4 seconds or Plug a Jumper at J3001 and Auto power on by plug in of AC adaptor.
4. You will see the boot-up picture on LCD display and trace logs come out from UART0.

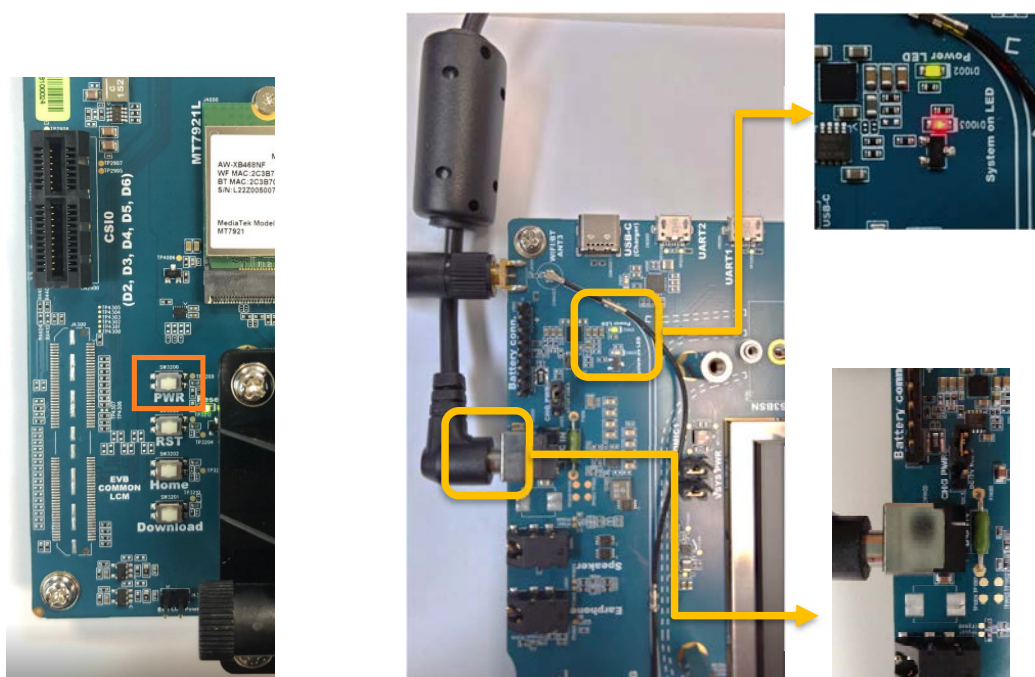


Figure 6-1. Plug AC Adapter , Press Power Key and LEDs Status

- ⚠ After the EVK power on, pay attention to the LED indicator is lighted on.
In normal conditions, there are total 2 LED indicators that will light
Please refer to the marks of above Figure1-2